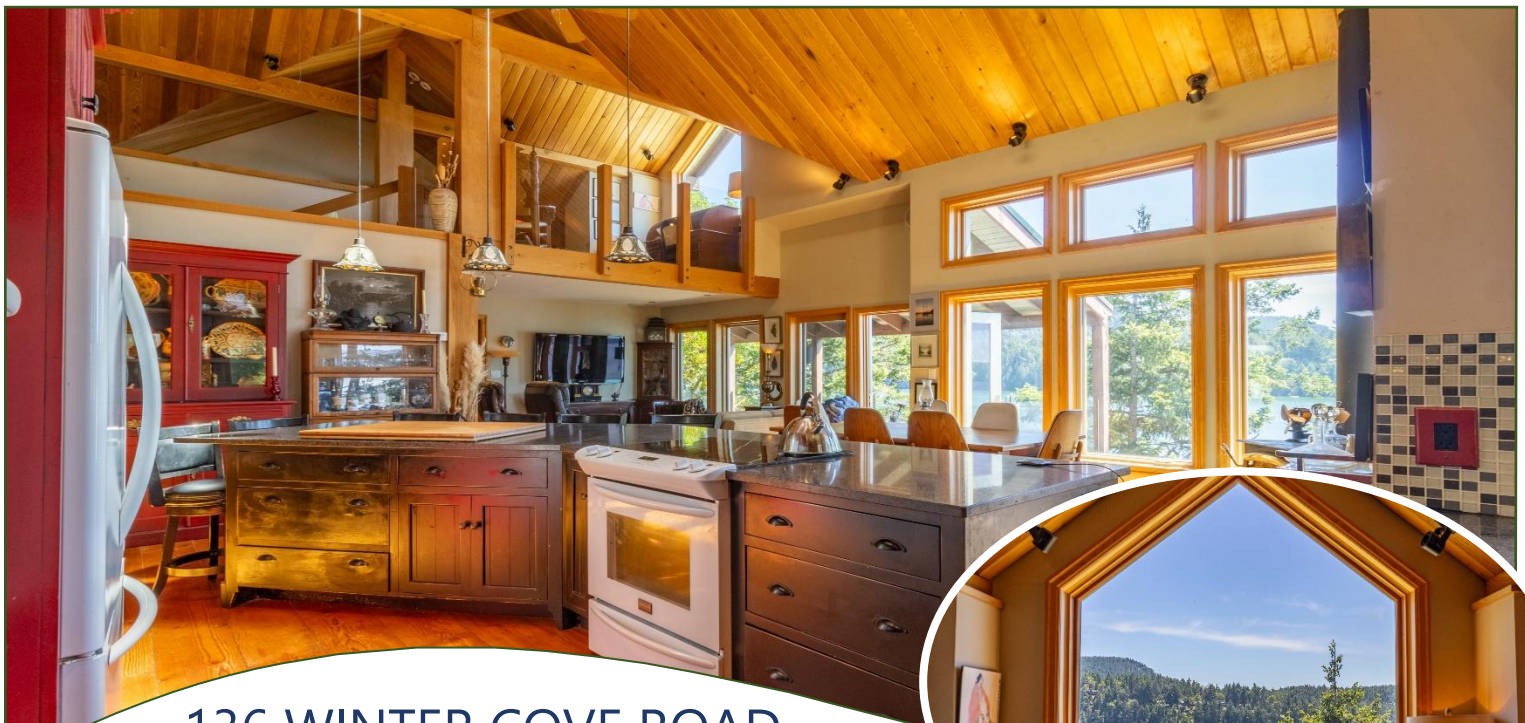


OCEANFRONT RETREAT



136 WINTER COVE ROAD





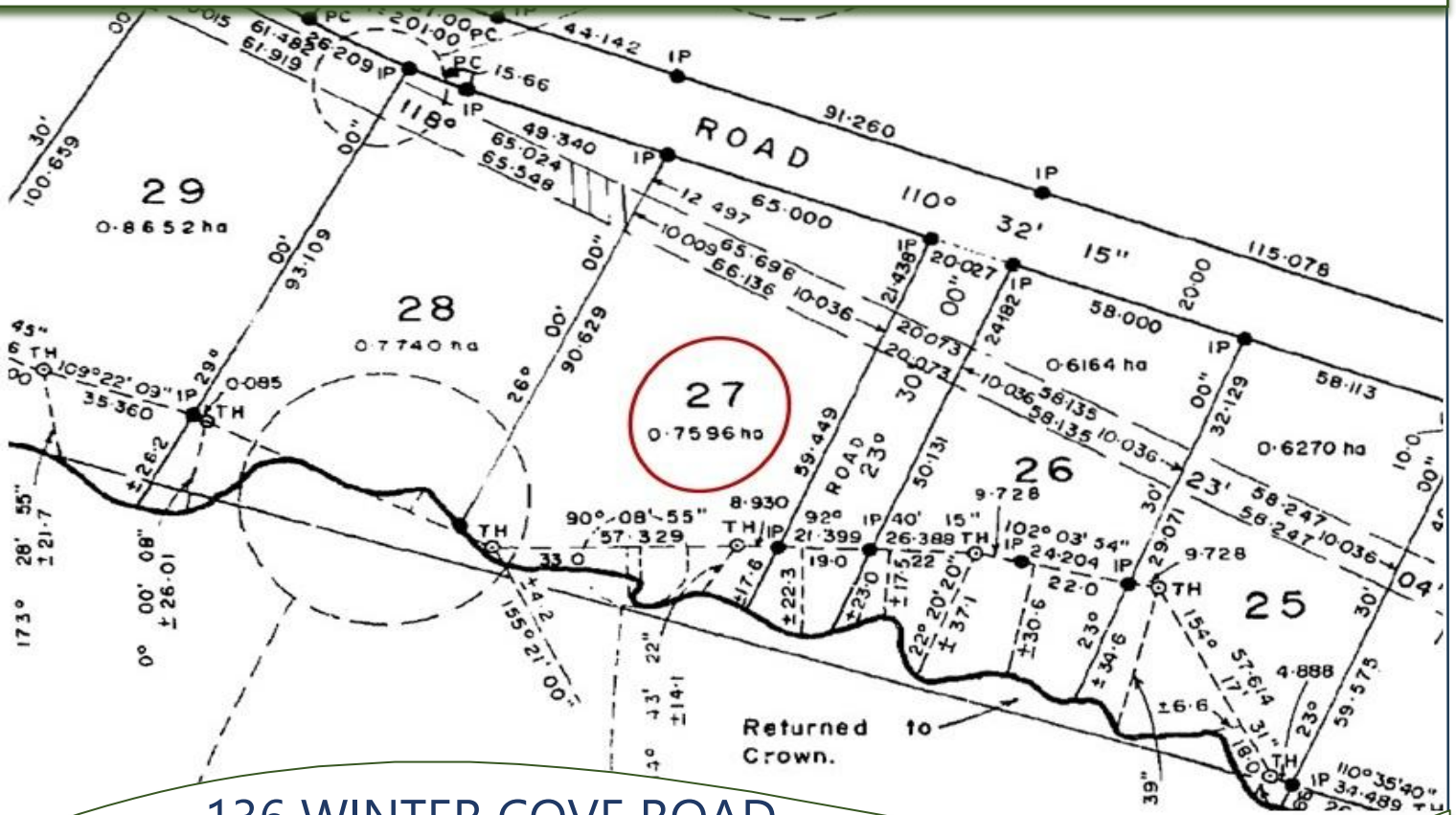
136 WINTER COVE ROAD

2 BEDS ~ 3 BATHS ~ 1,900 SQFT

This spacious multi-level south-facing waterfront home sits above Lyall Harbour with views down Navy Channel including stunning sunsets. It's a medium-bank waterfront with shoreline stairs to a legally conforming dock. The dock is in need of repair, but they are not issuing permits for docks anymore, so the value remains. The property is just under 2 acres which provides complete privacy. There are 2 bedrooms & a loft as well as two bathrooms in the house & a third in the grand garage. There are 2 sundecks, one with a hot tub & literally ocean views from all living spaces! The structure has been "overbuilt" & features many high-end touches. Once a few family heirlooms are removed, the home will be offered turnkey with tasteful furnishings. Although move-in ready, there are projects to consider, including making your own mark with a fresh coat of paint on the exterior, choosing how to make use of the grand garage & getting the dock repaired. All in all, an Island Gem!



PLOT PLAN & AERIAL VIEW

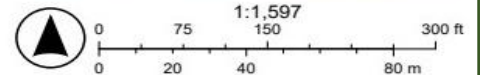


136 WINTER COVE ROAD



6/17/2026, 9:28:58 AM

- Property Boundaries
- Property Boundaries
- Civic Address
- World_Hillshade



Sources: Esri, TomTom, Garmin, FAO, NOAA, USGS, © OpenStreetMap contributors, and the GIS User Community, Sources: Esri, Vantor, Airbus DS.

SATURNA ISLAND MAP

Saturna Island
British Columbia, Canada

Subject Property
136 WINTER COVE



DISCLAIMER: While every effort is made to provide reliable information, Dockside Realty Ltd. makes no representations or warranties as to the accuracy of this brochure. All measurements are approximate; the buyer is responsible for verifying all data provided.

Map courtesy of Dockside Realty. Design Copyright © 2012 Minsky Designs www.minskydesigns.com. All rights reserved.



MICHAEL VALOUR, Licensed Realtor®
Office: 250-539-2121 • Cell: 250-818-3919 • www.DocksideRealty.ca